



# em.glaze™

flat glass economy

TECHNICAL DATA SHEET | 11.06.24 | V 2.0

Offering a clean, minimalistic finish both inside and out, em.glaze is the elegant go-to solution.

## Technical Data

### Glazing for standard, stock range:

- Double-glazed as standard:
- 4mm clear toughened outer
  - 18mm Argon filled warm edge spacer silicone bonded
  - 6.8mm laminated inner pane with PVB interlayer (8.8mm on larger units)
- Other glass specifications:
  - Refer to the glass specification and bespoke size table on page 4

### Frame:

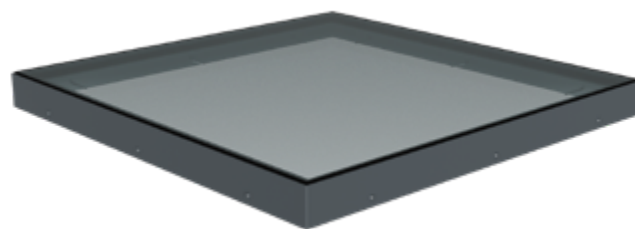
Rooflight frame is manufactured with fully thermally broken design and welded aluminium frame and cill detail. All visible aluminium is polyester powder coated.

### Performance – Rooflight:

Refer to glass specification and performance chart and data related to relevant unit size.

### Performance – Upstand:

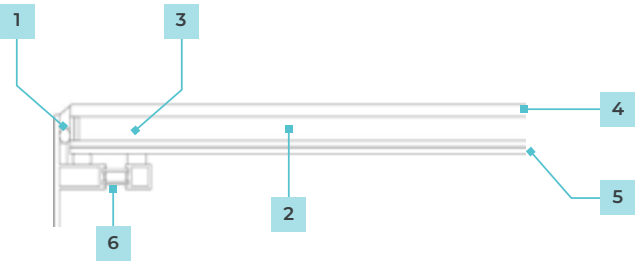
Refer to em.curb data sheet.



## Features & Benefits

- Available as fixed, manual and electric opening
- Flush glazed glass-to-edge design
- CWCT Class 3 glass ~~tested to BS EN6375-1~~
- Good thermal and sound insulation properties
- Factory pre-glazed for easy installation
- Ventilation options available
- Compatible with builders and uPVC upstands, and Timber Sloping Kerb
- Thermally broken frame
- Aluminium frame powder coated to any RAL colour
- 11 sizes available from stock for delivery from 24 hours
- Bespoke units available in 3–5 weeks

### Product Diagram



1	Frame	Aluminium
2	Gas	Argon
3	Warm spacer	✓
4	Toughened outer pane	✓
5	Laminated inner pane	✓
6	Thermal break + box section	✓
Install pitch (upstand)		5–15° recommended
External frame colour		RAL 7016 Anthracite grey or any standard RAL colour
Standard frit width		84mm
Ud-value *		1.3
Airtight BS6375-1:2015 and BS EN 12207		Class 4 300 Pa
Wind loads BS 6375-1:2015 and BS EN 12210		Class A3

\* complete glass unit tested vertically

### Testing & Certification

Requirement	Result	Classification
Air Tightness	Class 4 300 Pa	EN12207/ EN1026
Water Tightness	Pass (without penetration of water)	EN 1873
Impact Resistance	CWCT Class 3	–

### Guarantee

Whitesales product factories guarantee quality systems implementation process and environmental management systems.

### Rooflight Performance

Building Regulations (E&W) Approved Document L compliant design to achieve low U-Values:

- **Ud-Values:** As low as 1.3 W/m²K
- **G-Values:** As low as 0.36
- **Light Transmission:** Up to 80%

### Roof Pitch

Recommended to be installed on roof slopes 5-20°.

### Options & Accessories

#### Standard comfort controls:

- For electric opening (see Electric Opening data sheet)
- Option of retractive switch or comfort kit including a control panel, remote control and rain sensor

### Product Variations

#### Ventilation options:

- Available as standard fixed unit and manual opening
- Electrically opening units operated by slimline chain actuator (see electric opening data sheet)
- Stroke length(mm): 200mm

## Cleaning & Maintenance

Any maintenance of rooflights must be carried out strictly in accordance with the relevant 'Health and Safety' regulations.

**Glazing:** em.glaze rooflights should not be trafficked. Wash and rinse glazing at intervals, to be determined by the owner. Use a solution of 5% mild soap of detergent cleaning solution sprayed on to wash the glazing surface. Follow immediately with clean water and promptly remove excess rinse water with a clean squeegee. DO NOT use abrasive cloth, sponges, cleaner or solvent acid-based solution on the glazing. Should stronger cleaning compounds be needed to remove stubborn stains, consult Whitesales for recommendations.

**uPVC Curb:** em.curbs are made of shock resistant uPVC which does not need any additional finish. The curbs are equipped with a self-adhesive protection film on the inside, which must be removed at first use. When cleaning the curb, only use non-abrasive and neutral cleaning products, you will keep the smooth inner aspect.

**Electric motors:** Must be installed by a qualified electrician. Test annually by an Approved Electrical Installations Testing Company. Physically check fixing brackets to ensure fixings are secure.

## Note

We reserve the right to make technical changes. For more information on em.glaze and other Whitesales products, visit [whitesales.co.uk](https://whitesales.co.uk).

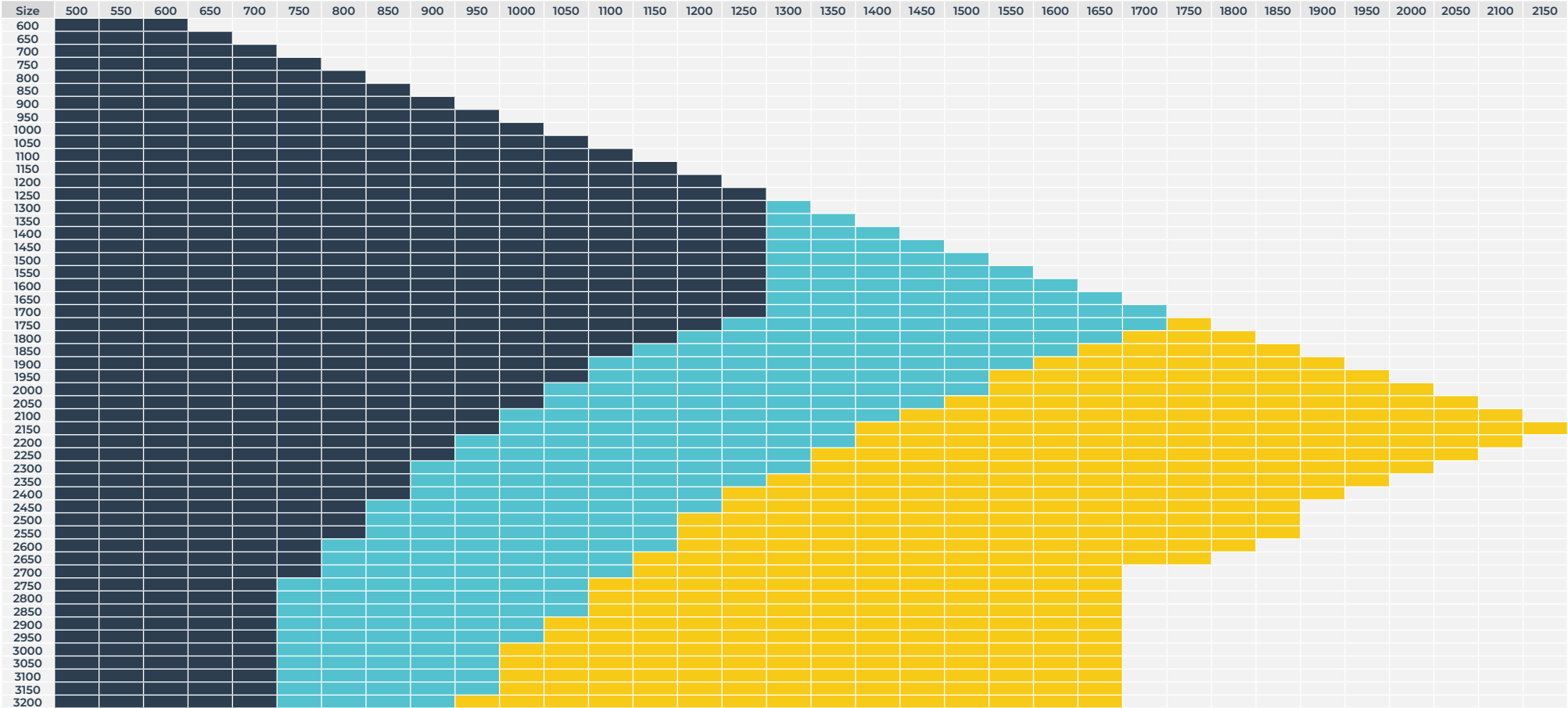
## Downloads

For installation instructions, CAD drawings, 3D BIM objects, please visit [whitesales.co.uk](https://whitesales.co.uk).



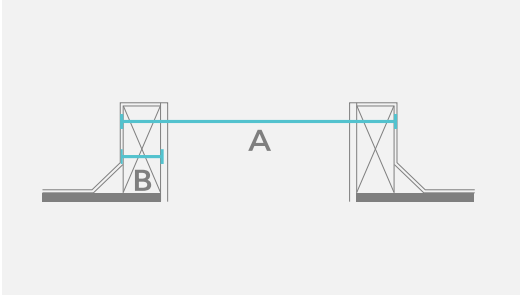
Bespoke Sizes & Glass Specification

Lead times: 3-5 weeks from drawing approval



Part number	Colour	Stock sizes		
72.0001	Grey	900	x	900
72.0002	Grey	1000	x	1000
72.0003	Grey	1100	x	1100
72.0012	Grey	600	x	600
72.0013	Grey	750	x	750
72.0014	Grey	1200	x	1200
72.0015	Grey	600	x	900
72.0016	Grey	600	x	1200
72.0017	Grey	900	x	1200
72.0018	Grey	1000	x	1500
72.0019	Grey	1000	x	2000

All sizes are to external kerb measurement



Glazing Specification

Key	Outer Pane	Cavity	Inner Pane	Black Frit (on face 4)
	4mm Toughened clear, face 1 chamfer	18mm warm Edge Spacer	3 + 3 + 0.8 pvb clear, smooth ground edge, Planterm	84mm
	6mm Toughened clear, face 1 chamfer	16mm warm Edge Spacer	3 + 3 + 0.8 pvb clear, smooth ground edge, Plantherm	84mm
	6mm Toughened clear, face 1 chamfer	16mm warm Edge Spacer	4 + 4 + 0.8 pvb clear, smooth ground edge, Plantherm	84mm